

Express Yourself with TALIA Jewelry

Co-founder-designer Tal Man talks about her gorgeous jewelry line
Words by Vanessa Pascale

TALIA™ Jewelry is an elegant line that allows customers to create their own statement necklaces or choose from a variety of predesigned options. Customers can choose charms from three different collections --ARIA, BRIO, and OPUS-- and the necklace length desired to create a luxe piece that suits their style. All of their glittering

pieces, studded with TALIA gems in sapphire, emerald, black, aqua diamond cut CZ..., are made from 925 sterling silver, nickel-free and plated with two layers of palladium and rhodium, while their rose gold jewelry features real gold plating. Charms can also be purchased separately to create new designs and shapes.

Pictured: Tal Man

Where did the idea for TALIA pendants come from?

Tal Man: "I was a designer focusing on big and unique one-of-a-kind pieces. Getting to know my customers, I realized that most of them wanted to participate in the design process, they wanted to be a part of the creation. Ronen [Berka, her husband] and I realized that women want to show their individuality, their unique style, and to have a say in the creation process. So, we created a jewelry concept that allows our community and customers to create and recreate every day. With over 300 different charms, every woman can easily find her one-of-a-kind creation."






Which one is your favorite collection, and why?

Tal Man: "That's like asking which one of my daughters I love more.... The three collections are so different, and I love each one of them with all my heart. The OPUS is very classic and fits every outfit. The BRIO is very stylish and geometric, it's more of a statement jewelry piece. And with the ARIA, you just can't go wrong. I wear them all, it just depends on my mood and what I want to express."

What sort of feedback have you been receiving from customers?

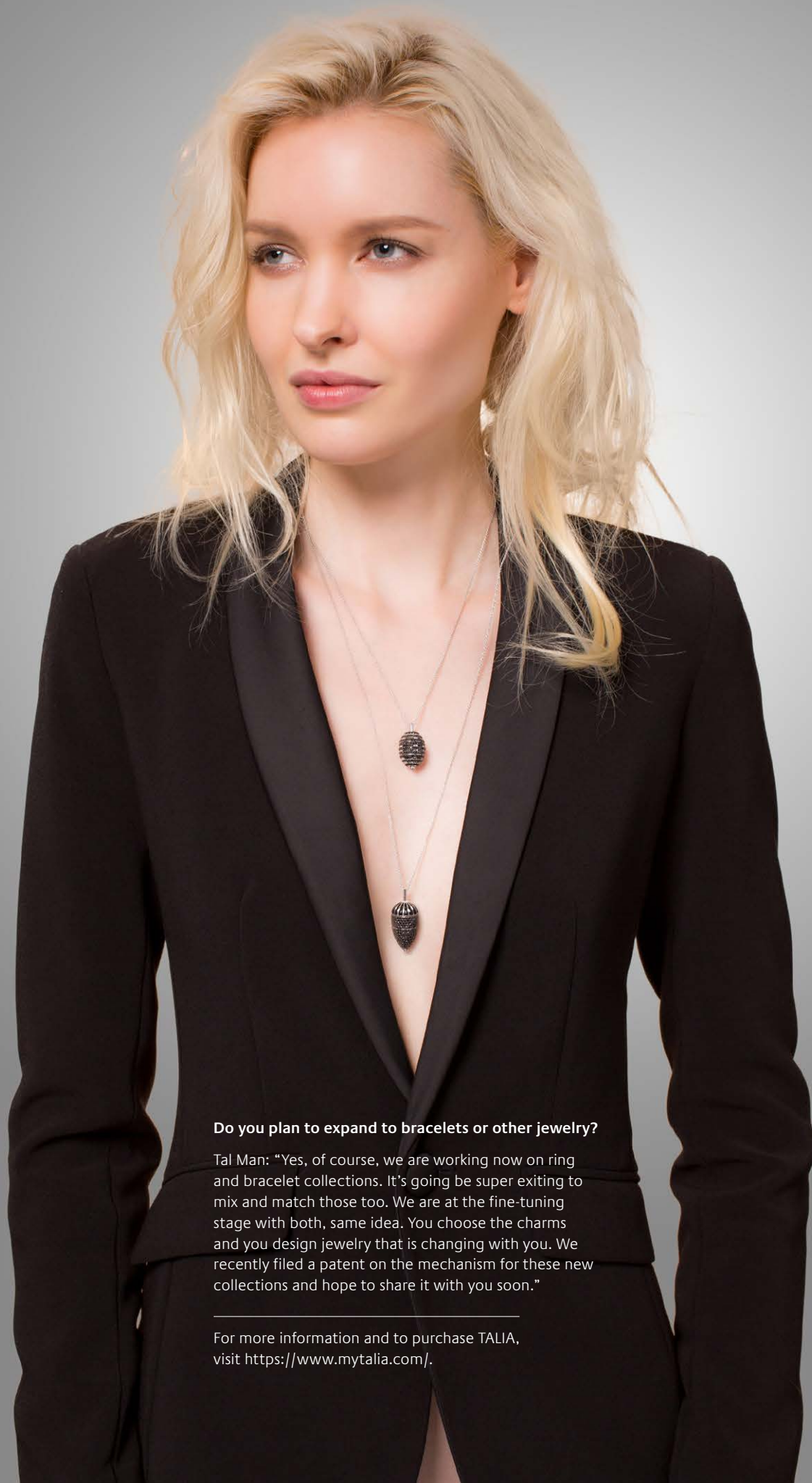
Tal Man: "We are amazed by their feedback every time. Customers understand the potential of the jewelry and discover more about it every day --a new way to express the creativity that exists in each and every one of them, a new way to diversify and change the design, a new way to bring their individuality into their pieces."



A full-page photograph of a woman with blonde, wavy hair, looking upwards and to the right. She is wearing a black, short-sleeved dress with a deep V-neckline and a large, dark, teardrop-shaped pendant on a thin chain. The background is a plain, light gray.

**How do you like to wear your TALIA necklaces:
layered or alone?**

Tal Man: "I love the layered look. I find it so much more interesting, filling the décolleté with bling. You don't need a sophisticated outfit, as long as your jewelry does the job. With the Try At Home Box of Talia you get three sizes of souls (rods) to create the size of your pendant, and two different lengths of necklace. So, my recommendation is: Yes, darling, layer them!"



Do you plan to expand to bracelets or other jewelry?

Tal Man: "Yes, of course, we are working now on ring and bracelet collections. It's going to be super exciting to mix and match those too. We are at the fine-tuning stage with both, same idea. You choose the charms and you design jewelry that is changing with you. We recently filed a patent on the mechanism for these new collections and hope to share it with you soon."

For more information and to purchase TALIA, visit <https://www.mytalia.com/>.